

## Appendix 2

## Tree Survey Schedule: Hillwood, Newbridge

Requested by: Tom Bomford architect  
 Site: Hillwood, Newbridge  
 Date of Survey: May 2022  
 Arboricultural consultant/surveyor: Martin Langton  
 Weather: Dry with bright intervals.

Tag	Species	Height (m)	Diam (m)	Stem Br <1.5m	Crown Spreads (m)				Height CC (m)	RPA Rad (m)	Age Class	Phys Cond	BS Cat	Est rem cont	Comments	Recommendations
					N	S	E	W								
<b>Trees at W1 (East end) Plot 1</b>																
801	Oak <i>Quercus robur</i>	19	0.65	1	5.0	5.0	7.0	4.5	4.0	7.80	M-A	Good	A2	>40	Healthy tree with no serious structural issues observed. Minor dead wood (<50mm dia). Erect roadside tree at north boundary. Crown restricted west. Some epicormics from past damage at east crown.	-
802	Oak <i>Quercus robur</i>	17	0.55	1	4.5	4.0	3.5	7.5	6.0	6.60	M-A	Good	A2	>40	Minor dead wood (<50mm dia). Roadside tree with crown bias west. Large branch stub at 16m [N] over drive. Small unstable dead wood.	-
803	Horse Chestnut <i>Aesculus hippocastanum</i>	13	0.50	1	7.0	7.0	5.0	7.5	2.0	6.00	S-M	Good	B2	20 to 40	Stem lean north and spreading crown. Girdling roots. Attractive at north boundary.	-
804	Beech <i>Fagus sylvatica</i>	17	0.80	1	5.0	5.0	6.0	6.0	4.0	9.60	O-M	Fair	C2	<10	Significant basal cavity open north, occupies around 70% of base. with hollowing up stem, and with longitudinal crack (to 1.5m). Attractive tree at north end of conifer screening but with limited life expectancy. Straight stem to 5m. Tree leans to south.	Further investigation of decay at base.
805	Hawthorn <i>Crataegus monogyna</i>	5	0.30	1	3.0	4.0	3.0	5.5	2.0	3.60	M-A	Fair	C2	10 to 20	Canopy suppressed, poor crown form.	-
806	Cypress <i>Cupressocyparis leylandii</i>	18	0.40	1	4.0		4.0		1.0	4.80	M-A	Good	C1	10 to 20	Line of around 30 closely spaced trees [0.1m-0.4m diam.] around 1m apart. Trees drawn and slender.	-
807	Hawthorn <i>Crataegus monogyna</i>	7	0.25	1	2.5	2.0	4.0	1.5	2.0	3.00	M-A	Dead	U	<2	Dead tree suppressed by cypress.	-
808	Alder <i>Alnus glutinosa</i>	13	0.38	1	3.0	2.0	6.0	2.0	4.0	4.56	M-A	Fair	B2	10 to 20	Crown bias and minor stem lean east at north end of group.	-
809	Red Oak <i>Quercus rubra</i>	15	0.40	1	4.5	4.5	1.5	6.0	5.0	4.80	S-M	Good	B2	20 to 40	Crown bias west in group. Decurrent form with long upswept scaffolds. 50mm dead wood at lower crown.	-
810	Red Oak <i>Quercus rubra</i>	16	0.47	1	7.5	2.0	7.0	1.5	3.0	5.64	M-A	Good	B2	20 to 40	Decurrent form with crown bias north from main tension fork at 6m. Damaged hanging branch at 7m.	Crown clean, removing damaged hanging branch at 7m and any unstable dead wood.
811	Red Oak <i>Quercus rubra</i>	14	0.32	1	1.5	5.0	2.0	5.5	7.0	3.84	S-M	Fair	C1	10 to 20	Drawn tree with small high crown in group. 50mm unstable dead wood at lower crown.	Crown clean, removing unstable dead wood.

## Appendix 2

## Tree Survey Schedule: Hillwood, Newbridge

Tag	Species	Height (m)	Diam (m)	Stem Br <1.5m	Crown Spreads (m)				Height CC (m)	RPA Rad (m)	Age Class	Phys Cond	BS Cat	Est rem cont	Comments	Recommendations
					N	S	E	W								
812	Ash <i>Fraxinus excelsior</i>	15	0.42	1	4.5	4.5	7.0	5.0	6.0	5.04	S-M	Fair-poor	C1	10 to 20	Low vigour, poor shoot extension. Minor crown dieback. Erect tree of generally good form. Minor dead wood.	-
813	Hawthorn <i>Crataegus monogyna</i>	8	0.35	2	0.5	1.0	3.0	1.5	2.0	3.50	M-A	Fair-poor	C2	10 to 20	Canopy suppressed, poor crown form. Restricted beside cypress.	-
814	Holly <i>Ilex aquifolium</i>	8	0.22	1	4.0	5.0	6.0	0.5	1.0	2.64	M-A	Fair	C2	10 to 20	Canopy suppressed, poor crown form. Restricted beside cypress.	-
815	Beech <i>Fagus sylvatica</i>	19	0.95	1	7.0	6.0	7.0	7.0	3.0	11.40	O-M	Good	A3	10 to 20	Large tree of generally good form, dominant beside cypress. Rough bark with <i>Cryptococcus fagisuga</i> infection at lower stem. Tension fork at 9m [n/s]. Unstable dead wood at 5m.	-
816	Horse Chestnut <i>Aesculus hippocastanum</i>	13	0.45	1	5.0	2.0	5.0	5.0	2.0	5.40	S-M	Good	A2	>40	Tree of generally good form with crown restricted south [cherry].	-
817	Horse Chestnut <i>Aesculus hippocastanum</i>	13	0.55	1	7.0	7.0	5.0	7.0	3.0	6.60	M-A	Good	B2	20 to 40	Straight stem to 5m. Crown bias west with abrupt bends in lower primary branches.	-
818	Elm <i>Ulmus glabra</i>	15	0.42	1	6.5	3.0	5.0	4.5	3.0	5.04	M-A	Good	B2	10 to 20	Straight stem to 5m at edge of garden; decurrent form. Large step root beside collapsing plum.	-
819	Horse Chestnut <i>Aesculus hippocastanum</i>	16	0.70	1	4.0	10.0	6.0	7.5	4.0	8.40	M	Good	A3	20 to 40	Large tree in garden, previously reduced to 13m with vigorous regrowth.	-
820	Lime <i>Tilia x europaea</i>	16	0.70	1	6.0	3.0	7.0	4.0	3.0	8.40	M	Fair	A3	20 to 40	Large tree at edge of garden, previously reduced to 13m with secondary regrowth. Some decay at pruning points.	-
821	Ash <i>Fraxinus excelsior</i>	15	0.50	1	4.5	3.5	8.0	8.0	7.0	6.00	M-A	Fair-poor	C2	10 to 20	Low vigour, poor shoot extension. Minor dead wood (<50mm dia). Garden tree of moderate form.	-
822	Sycamore <i>Acer pseudoplatanus</i>	18	0.65	1	7.5	7.0	6.0	7.0	4.0	7.80	M	Good	A2	20 to 40	Attractive garden tree 3m south of drive and 2m brick wall. Major tension fork at 5m [n/s]. Generally good crown form.	-
823	Sycamore <i>Acer pseudoplatanus</i>	18	0.70	1	6.0	4.5	5.0	6.0	5.0	8.40	M	Good	A2	20 to 40	Roadside tree of generally good form. Lifts tarmac at base. Secondary regrowth developing at lower west crown. Moderate basal flare.	-
824	Sycamore <i>Acer pseudoplatanus</i>	19	0.75	1	7.0	4.5	5.0	6.0	5.0	9.00	M	Good	A2	20 to 40	Roadside tree of generally good form. Minor lifting of tarmac at base. Stem lean north. Large dead branch from 7m (N) over woodland.	-
<b>Trees at edge of W3 (conifers) Plot 2</b>																
825	Silver Fir <i>Abies alba</i>	23	0.77	1	8.0	3.0	6.0	3.0	0.5	9.24	M	Good	A2	>40	Healthy tree of good form. Minor stem lean east at edge of group. Garage drive 8m north, beyond low bund.	-
826	Silver Fir <i>Abies alba</i>	21	0.50	1	4.0	3.0	2.0	2.0	7.0	6.00	M-A	Fair	U	<2	Movement/instability in root plate. Supported by 825.	Fell unstable tree.

## Appendix 2

## Tree Survey Schedule: Hillwood, Newbridge

Tag	Species	Height (m)	Diam (m)	Stem Br <1.5m	Crown Spreads (m)				Height CC (m)	RPA Rad (m)	Age Class	Phys Cond	BS Cat	Est rem cont	Comments	Recommendations
					N	S	E	W								
827	Scots Pine <i>Pinus sylvestris</i>	17	0.40	1	4.5	2.0	1.5	3.0	6.0	4.80	M-A	Good	B1	20 to 40	Erect attractive tree at edge of group. Banking 4m north.	-
828	Scots Pine <i>Pinus sylvestris</i>	16	0.47	1	5.0	3.0	3.0	2.5	5.0	5.64	M-A	Good	B2	20 to 40	Minor dead wood (<50mm dia). Crown bias north at edge of group.	-
829	Western Red Cedar <i>Thuja plicata</i>	19	0.65	1	6.0	4.5	6.0	6.0	1.0	7.80	M-A	Good	A2	>40	Healthy tree of good form. Erect tree at edge of group with good form and taper.	-
830	Larch <i>Larix decidua</i>	22	0.50	1	4.0	3.0	5.0	3.0	7.5	6.00	M	Good	A2	20 to 40	Attractive with 15 degree correcting lean east.	-
831	Douglas Fir <i>Abies menziesii</i>	17	0.30	1	4.0	2.0	4.0	3.0	6.0	3.60	S-M	Fair	C1	10 to 20	Slender drawn tree in group.	-
832	Douglas Fir <i>Abies menziesii</i>	23	0.50	1	3.5	5.0	5.5	4.0	1.0	6.00	M-A	Good	A2	10 to 20	Straight stem and minor stem lean east at edge of group.	-
<b>Trees at W1 (West end) Plot 2</b>																
833	Sycamore <i>Acer pseudoplatanus</i>	15	0.55	1	4.5	8.0	7.5	7.0	3.5	6.60	M-A	Good	A2	>40	Generally good form at south end of site; crown bias east and south. Large step root [s] towards boundary ditch.	-
834	Sycamore <i>Acer pseudoplatanus</i>	14	0.45	1	4.0	6.0	7.0	4.5	4.0	5.40	S-M	Good	B1	20 to 40	Minor dead wood (<50mm dia). Generally good form with minor stem lean east.	-
835	Sycamore <i>Acer pseudoplatanus</i>	12	0.40	1	5.0	4.0	6.0	4.5	5.0	4.80	S-M	Good	B1	20 to 40	Erect tree with upswept primary branches, finely branched outer crown.	-
836	Sycamore <i>Acer pseudoplatanus</i>	10	0.35	1	5.0	1.5	2.5	2.0	3.0	4.20	Y	Fair	C2	10 to 20	[0.26; 0.1] Self seeded, restricted tree.	-
837	Hawthorn <i>Crataegus monogyna</i>	5	0.27	1	4.5	4.0	3.0	3.5	1.0	3.24	M-A	Fair	B2	20 to 40	Partially restricted crown beside 838.	-
838	Beech <i>Fagus sylvatica</i>	13	0.50	1	6.0	4.5	4.5	5.0	4.0	6.00	S-M	Fair	C1	10 to 20	Significant weak compression form at 4m with large area of decay. Further included unions and decay.	-
839	Horse Chestnut <i>Aesculus hippocastanum</i>	12	0.40	1	6.5	6.0	6.0	6.5	2.0	4.80	S-M	Good	A2	>40	Healthy tree of good form. Finely branched crown.	-
840	Ash <i>Fraxinus excelsior</i>	14	0.37	1	4.5	5.0	5.0	6.0	5.0	4.44	M-A	Fair-poor	C2	<10	Low vigour, poor shoot extension. Crown dieback noted. Minor dead wood and branch stubs.	Crown clean.
841	Beech <i>Fagus sylvatica</i>	13	0.55	M	4.0	5.0	4.0	4.5	1.5	5.50	S-M	Fair	C1	10 to 20	[0.27, 0.2, 0.15 x 4] Multi stemmed from 1m. Stem cankers and decay at 1m.	-
842	Sycamore <i>Acer pseudoplatanus</i>	8	0.37	1	5.0	5.0	4.5	5.0	3.0	4.44	S-M	Fair	B2	20 to 40	Tree of generally good form.	-
843	Beech <i>Fagus sylvatica</i>	13	0.75	2	9.0	5.0	7.0	8.0	1.0	7.50	M-A	Good	B2	10 to 20	[0.68; 0.34] 2 stems from compression union with large included bark at 1.5m [nw/se], 3rd stem north. Spreading crown.	-
844	Oak <i>Quercus robur</i>	12	0.43	1	5.5	8.0	5.0	3.5	3.0	5.16	S-M	Good	B1	20 to 40	Generally good form with crown bias south at edge of woodland. Longitudinal crack from 0m-3m [se] with minor decay at base. Dead wood at lower crown.	-

## Appendix 2

## Tree Survey Schedule: Hillwood, Newbridge

Tag	Species	Height (m)	Diam (m)	Stem Br <1.5m	Crown Spreads (m)				Height CC (m)	RPA Rad (m)	Age Class	Phys Cond	BS Cat	Est rem cont	Comments	Recommendations
					N	S	E	W								
845	Oak <i>Quercus robur</i>	12	0.38	1	4.5	7.0	3.5	5.0	3.0	4.56	S-M	Good	A2	>40	Generally good form with crown bias south at edge of woodland.	-
846	Beech <i>Fagus sylvatica</i>	7	0.35	2	2.5	6.0	4.0	5.0	1.0	3.50	S-M	Good	C2	10 to 20	[0.27; 0.15] Poor form beside oak.	-
847	Sycamore <i>Acer pseudoplatanus</i>	9	0.25	1	1.0	3.0	1.5	4.0	2.5	3.00	S-M	Fair	C1	10 to 20	Erect tree with partially restricted crown, near H. Chestnut 848.	-
848	Horse Chestnut <i>Aesculus hippocastanum</i>	14	0.60	1	6.5	6.5	6.0	6.5	1.0	7.20	M-A	Good	B1	20 to 40	Spreading crown; unusual form with large upswept limbs and crossing branches at lower crown. Small upswept stem from weak compression union with included bark with main stem at 2.5m.	-
849	Sycamore <i>Acer pseudoplatanus</i>	9	0.33	1	4.0	5.0	1.5	4.5	2.5	3.96	S-M	Fair	C1	10 to 20	Restricted crown beside Horse Chestnut.	-
850	Sycamore <i>Acer pseudoplatanus</i>	15	0.33	1	4.0	3.0	6.0	2.0	3.5	3.96	S-M	Good	C2	10 to 20	Suppressed crown form west beside Chestnut. Stems fused at 4m.	-
851	Beech <i>Fagus sylvatica</i>	13	0.40	1	3.0	5.5	5.0	2.5	1.5	4.80	S-M	Good	B2	20 to 40	Minor dead wood (<50mm dia). Erect tree with finely branched crown, restricted to west beside H Chestnut.	-
<b>Trees at W2 (north of W1 west) Plot 2</b>																
852	Sycamore <i>Acer pseudoplatanus</i>	12	0.25	1	3.0	1.0	6.0	1.5	1.5	3.00	S-M	Fair	C2	10 to 20	Unbalanced fork and suppressed crown form.	-
853	Ash <i>Fraxinus excelsior</i>	12	0.33	1	4.5	4.0	6.0	3.5	4.0	3.96	M-A	Fair-poor	C2	10 to 20	Minor dead wood (<50mm dia). Minor crown dieback. Partially restricted crown beside Horse Chestnut.	-
854	Ash <i>Fraxinus excelsior</i>	13	0.45	M	5.0	3.0	4.5	6.0	4.0	4.50	S-M	Fair-poor	C2	10 to 20	[0.25; 0.23 x 2] 3 stems from base. Low vigour, poor shoot extension. Minor dead wood (<50mm dia). Crown bias north towards boundary. Chalara ash dieback.	-
855	Ash <i>Fraxinus excelsior</i>	13	0.30	1	6.5	6.0	5.0	6.5	4.0	3.60	S-M	Fair-poor	C2	10 to 20	Low vigour, poor shoot extension. Minor crown dieback. Spreading finely branched crown.	-
856	Ash <i>Fraxinus excelsior</i>	9	0.23	1	3.0	3.0	2.0	4.0	3.0	2.76	S-M	Poor	U	<10	Dying with very small live crown.	-
857	Ash <i>Fraxinus excelsior</i>	11	0.25	1	3.0	3.5	2.5	4.0	5.0	3.00	S-M	Poor	C3	<10	Low vigour, poor shoot extension. Notable crown dieback, Chalara. Dead wood throughout crown.	-
858	Sycamore <i>Acer pseudoplatanus</i>	11	0.30	1	4.0	3.0	6.0	3.5	2.5	3.60	S-M	Fair	C2	10 to 20	Erect self seeded tree above culvert, crown bias east towards space.	-
859	Ash <i>Fraxinus excelsior</i>	15	0.35	1	8.0	4.0	2.5	7.0	6.5	4.20	M-A	Fair-poor	C2	10 to 20	Low vigour, poor shoot extension. Minor dead wood (<50mm dia). 0.34 Major fork at 2m [n/s], spreading crown with minor dieback Chalara.	Monitor condition.
860	Ash <i>Fraxinus excelsior</i>	12	0.50	2	8.5	4.5	4.0	6.0	5.0	5.00	M-A	Poor	C2	<10	Significant dieback, stag-headed. Major dead wood (>50mm dia). [0.37, 0.3] Dead wood throughout crown.	Remove dead wood if target increased.
861	Ash <i>Fraxinus excelsior</i>	12	0.27	1	4.5	2.0	1.5	4.5	4.0	3.24	S-M	Fair-poor	C3	10 to 20	Notable crown dieback, Chalara. Small dead wood throughout crown.	-

## Appendix 2

## Tree Survey Schedule: Hillwood, Newbridge

Tag	Species	Height (m)	Diam (m)	Stem Br <1.5m	Crown Spreads (m)				Height CC (m)	RPA Rad (m)	Age Class	Phys Cond	BS Cat	Est rem cont	Comments	Recommendations
					N	S	E	W								
862	Ash <i>Fraxinus excelsior</i>	15	0.25	1	6.0	3.0	3.5	3.5	5.0	3.00	M-A	Fair-poor	C1	10 to 20	Low vigour, poor shoot extension. Erect tree beside north boundary. Crown dieback, Chalara.	-
863	Ash <i>Fraxinus excelsior</i>	12	0.20	1	3.5	2.5	2.5	3.0	4.0	2.40	S-M	Fair-poor	C2	10 to 20	Low vigour, poor shoot extension. Minor dead wood (<50mm dia). Chalara ash dieback.	-
864	Beech <i>Fagus sylvatica</i>	13	0.45	2	4.0	5.5	4.0	4.0	1.0	4.50	S-M	Good	C2	10 to 20	[0.3 x 2] 2 stems from weak compression fork with included bark [e/w] at base. Restricted rooting south -ditch. 3 smaller trees to east with crowns over ditch.	-
865	Ash <i>Fraxinus excelsior</i>	14	0.50	1	4.5	8.0	6.5	6.0	2.0	6.00	M	Fair-poor	B3	10 to 20	Low vigour, poor shoot extension. Major dead wood (>50mm dia). Generally good form at roadside with spreading crown. Chalara ash dieback with dead wood throughout crown.	-
866	Holly <i>Ilex aquifolium</i>	7	0.25	1	1.0	3.0	3.5	3.5	1.0	3.00	S-M	Good	B2	20 to 40	Erect tree pruned at roadside. Attractive at end of intermittent hawthorn screen.	-
867	Sycamore <i>Acer pseudoplatanus</i>	14	0.68	1	4.5	8.0	5.5	4.0	4.0	8.16	M	Good	B3	20 to 40	Roadside tree with raised levels at base. Previous pollard. 3 stems from 2m, west with historic failure at 3m leaving decaying stub. Major crown bias south.	-
868	Sycamore <i>Acer pseudoplatanus</i>	15	0.80	1	3.5	9.0	7.5	5.5	2.0	9.60	M	Good	B3	20 to 40	Attractive roadside tree with raised levels at base. Major crown bias south. Neutral fork at 3m [e/w]. Previous reduction pruning with secondary stems developing and some decay.	Monitor. Consider future reduction pruning.
869	Sycamore <i>Acer pseudoplatanus</i>	11	0.28	1	4.0	4.0	3.5	4.0	2.0	3.36	S-M	Good	C1	10 to 20	Self seeded, erect tree beside entrance gate. Hard standing leads to garage. Crown bias east over drive.	Crown lift beside entrance gate to give clearance.
870	Sycamore <i>Acer pseudoplatanus</i>	18	0.80	1	5.0	6.0	5.0	7.0	3.0	9.60	M	Good	A2	20 to 40	Generally good form, located on small island between access roads at junction.	-
<b>Hedges</b>																
H1	Yew <i>Taxus baccata</i>	2	0.15	M	1.0	1.0	N/A	N/A	0.5	2.00	S-M	Good	B2	>20	Small section of uniform, maintained boundary hedging providing screening.	Maintain as currently.
H2	Hawthorn <i>Crataegus monogyna</i>	3	0.20	M	1.0	3.0	N/A	N/A	0.5	2.50	M	Fair-poor	C2	10 to 20	Intermittent single row beside access road, with dead trees and stem decay.	Consider replanting and draining.

Key:-

Stem branch&lt;1.5m: M = multi-stemmed; 2 = twin stemmed

Height CC: Height of crown clearance

RPA radius: radius of Root Protection Area

Age-class: 0-M = over-mature; M = mature; M-A = early mature; S-M = semi-mature; Y = Young

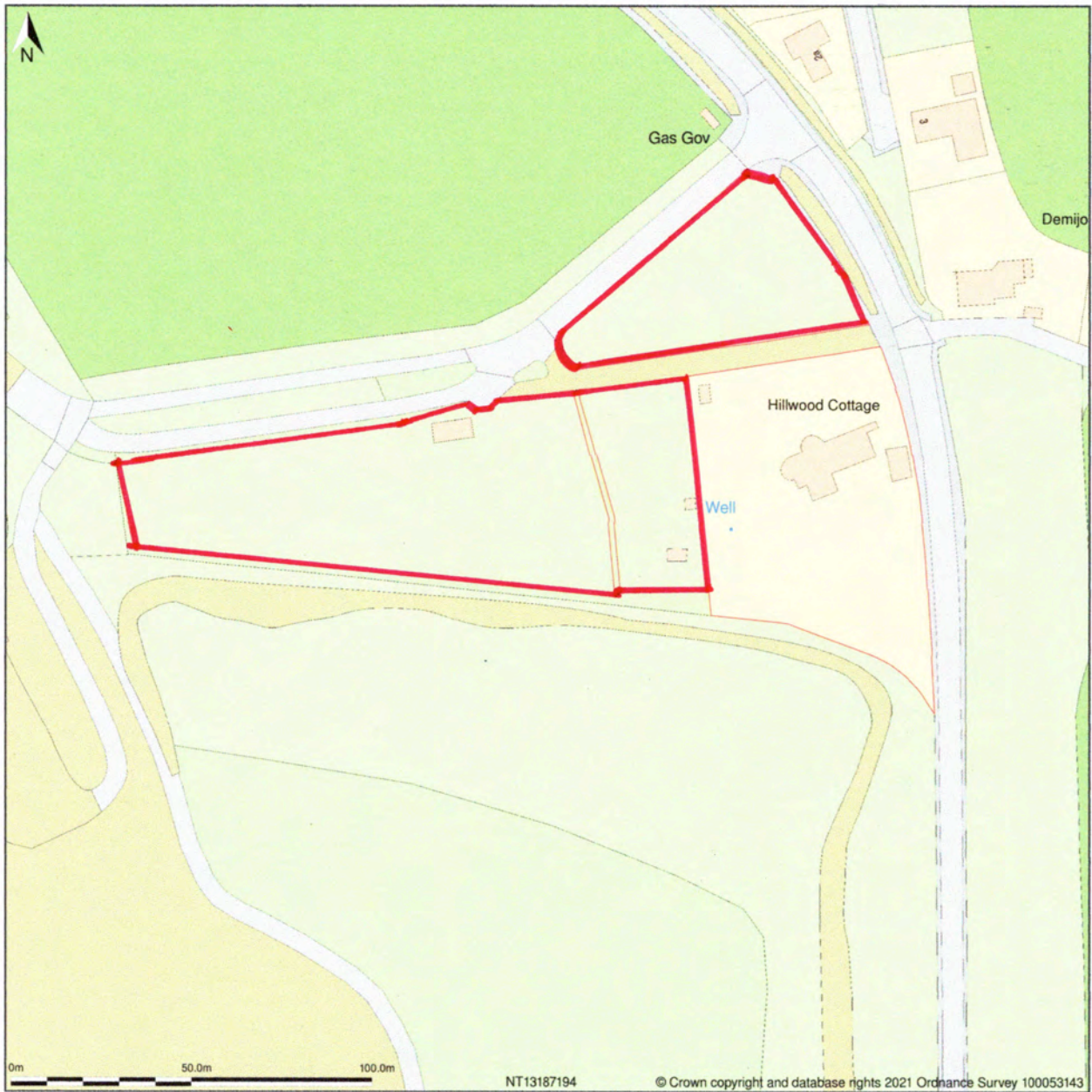
Phys cond: Physiological condition

Est. rem cont: Estimated remaining contribution (years).

Prel. Man. Res.: Preliminary management recommendations

Cat Grading: Category grading as per B.S. 5837: 2012.

Hillwood Cottage, Harvest Road, Ratho newbridge, Newbridge, Edinburgh, EH28 8LU



Location Plan shows area bounded by: 313033.59, 671793.75 313333.59, 672093.75 (at a scale of 1:1250), OSGridRef: NT13187194. The representation of a road, track or path is no evidence of a right of way. The representation of features as lines is no evidence of a property boundary.

Produced on 20th Dec 2021 from the Ordnance Survey National Geographic Database and incorporating surveyed revision available at this date. Reproduction in whole or part is prohibited without the prior permission of Ordnance Survey. © Crown copyright 2021. Supplied by <https://www.buyaplan.co.uk> digital mapping a licensed Ordnance Survey partner (100053143). Unique plan reference: #00663724-322E3A

Ordnance Survey and the OS Symbol are registered trademarks of Ordnance Survey, the national mapping agency of Great Britain. Buy A Plan logo, pdf design and the [www.buyaplan.co.uk](https://www.buyaplan.co.uk) website are Copyright © Pass Inc Ltd 2021

# KEY

## Tree Categories

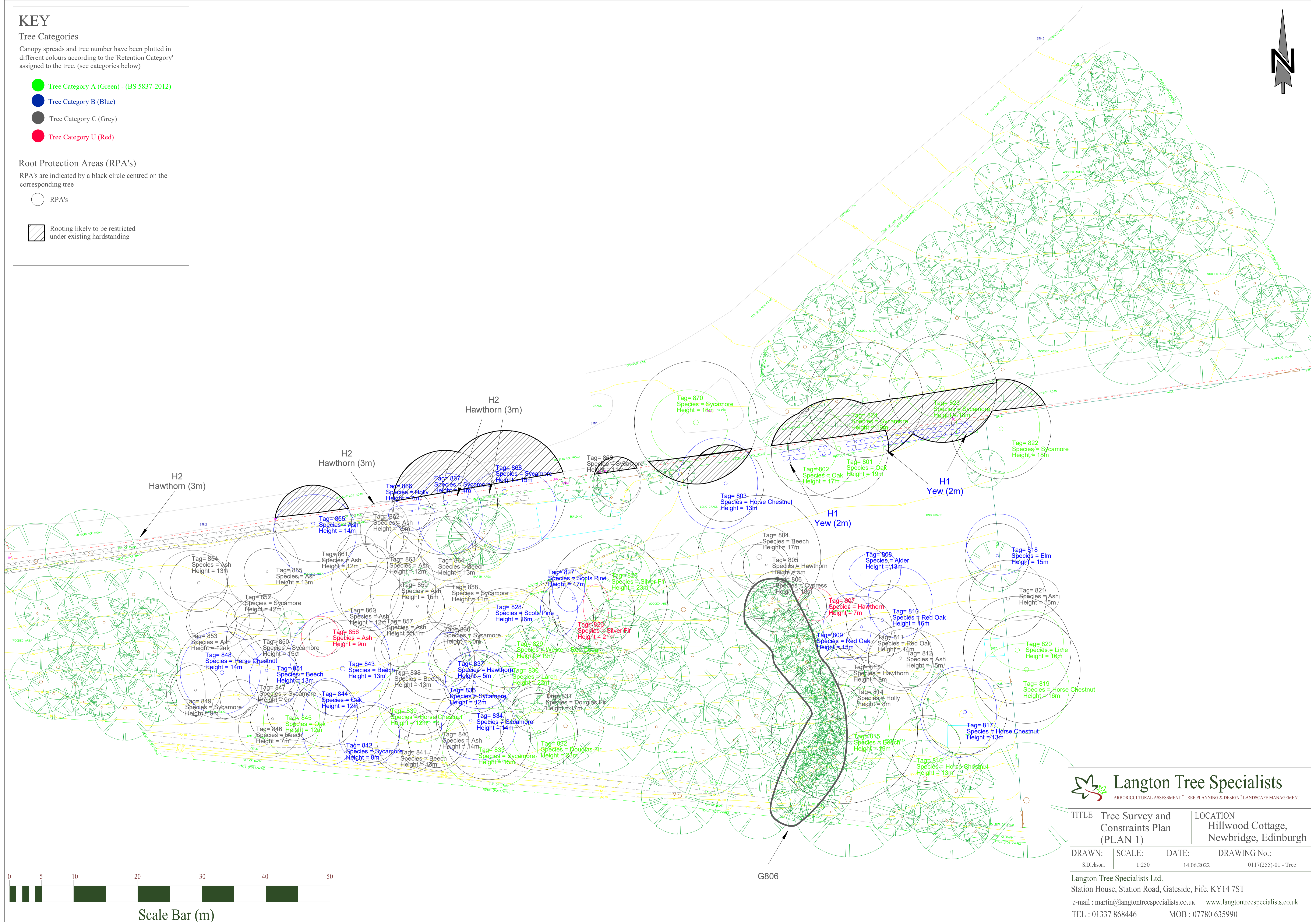
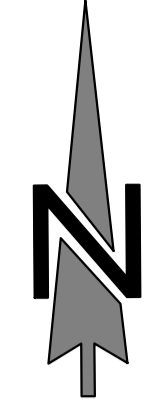
Canopy spreads and tree number have been plotted in different colours according to the 'Retention Category' assigned to the tree. (see categories below)

- Tree Category A (Green) - (BS 5837-2012)
- Tree Category B (Blue)
- Tree Category C (Grey)
- Tree Category U (Red)

## Root Protection Areas (RPA's)

RPA's are indicated by a black circle centred on the corresponding tree

- RPA's
- Rooting likely to be restricted under existing hardstanding



**Langton Tree Specialists**  
ARBORICULTURAL ASSESSMENT | TREE PLANNING & DESIGN | LANDSCAPE MANAGEMENT

TITLE Tree Survey and Constraints Plan (PLAN 1)		LOCATION Hillwood Cottage, Newbridge, Edinburgh	
DRAWN: S.Dickson.	SCALE: 1:250	DATE: 14.06.2022	DRAWING No.: 0117(255)-01 - Tree
Langton Tree Specialists Ltd. Station House, Station Road, Gateside, Fife, KY14 7ST e-mail : martin@langontreespecialists.co.uk www.langontreespecialists.co.uk TEL : 01337 868446 MOB : 07780 635990			

# KEY

## Tree Categories

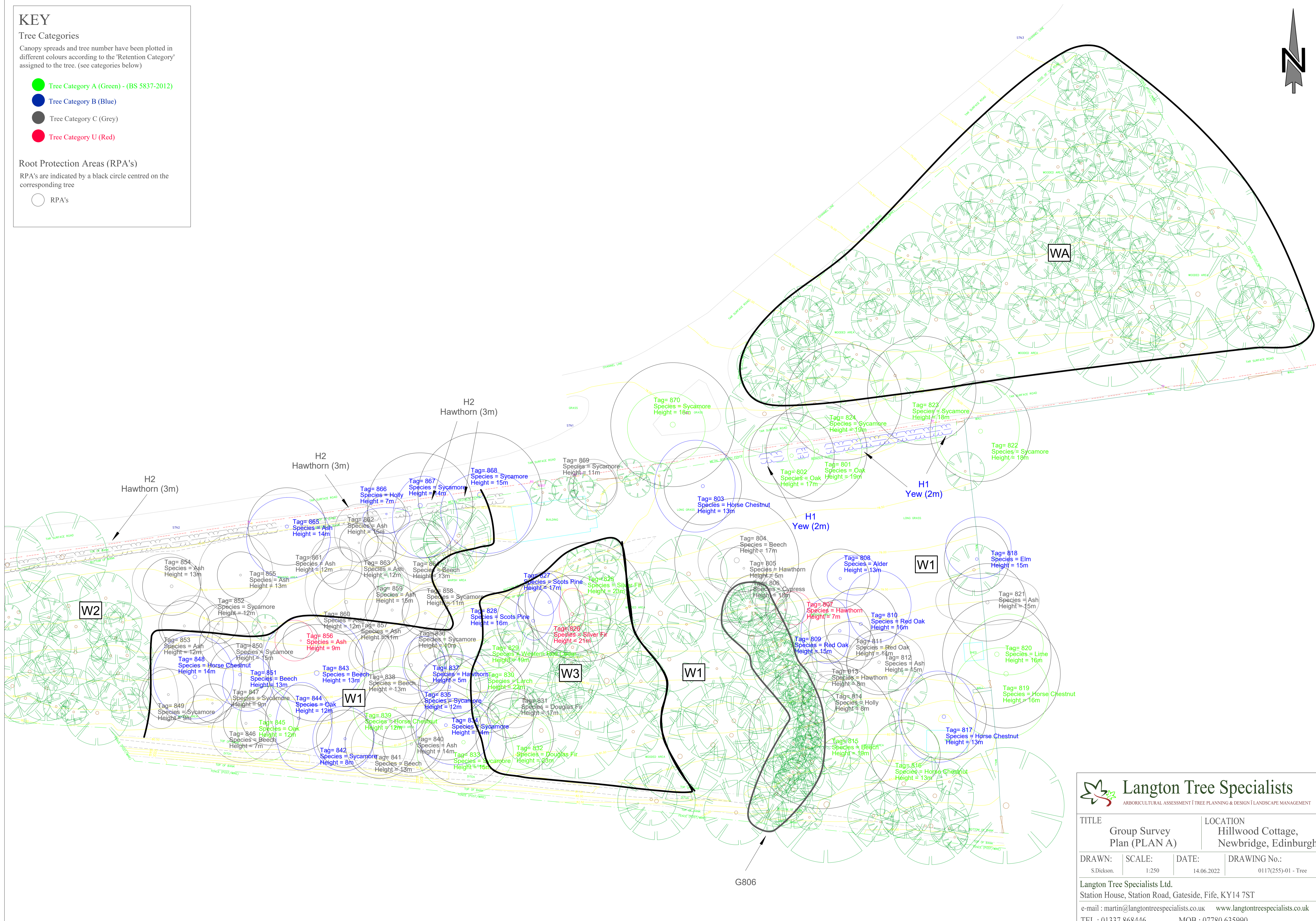
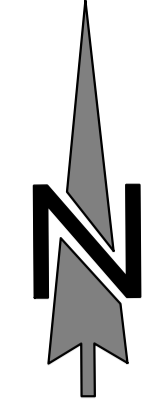
Canopy spreads and tree number have been plotted in different colours according to the 'Retention Category' assigned to the tree. (see categories below)

- Tree Category A (Green) - (BS 5837-2012)
- Tree Category B (Blue)
- Tree Category C (Grey)
- Tree Category U (Red)

## Root Protection Areas (RPA's)

RPA's are indicated by a black circle centred on the corresponding tree

- RPA's



### Langton Tree Specialists

ARBORICULTURAL ASSESSMENT | TREE PLANNING & DESIGN | LANDSCAPE MANAGEMENT

TITLE <b>Group Survey Plan (PLAN A)</b>		LOCATION <b>Hillwood Cottage, Newbridge, Edinburgh</b>	
DRAWN: S.Dickson.	SCALE: 1:250	DATE: 14.06.2022	DRAWING No.: 0117(255)-01 - Tree

Langton Tree Specialists Ltd.  
Station House, Station Road, Gateside, Fife, KY14 7ST  
e-mail : martin@langontreespecialists.co.uk    www.langontreespecialists.co.uk  
TEL : 01337 868446    MOB : 07780 635990



# KEY

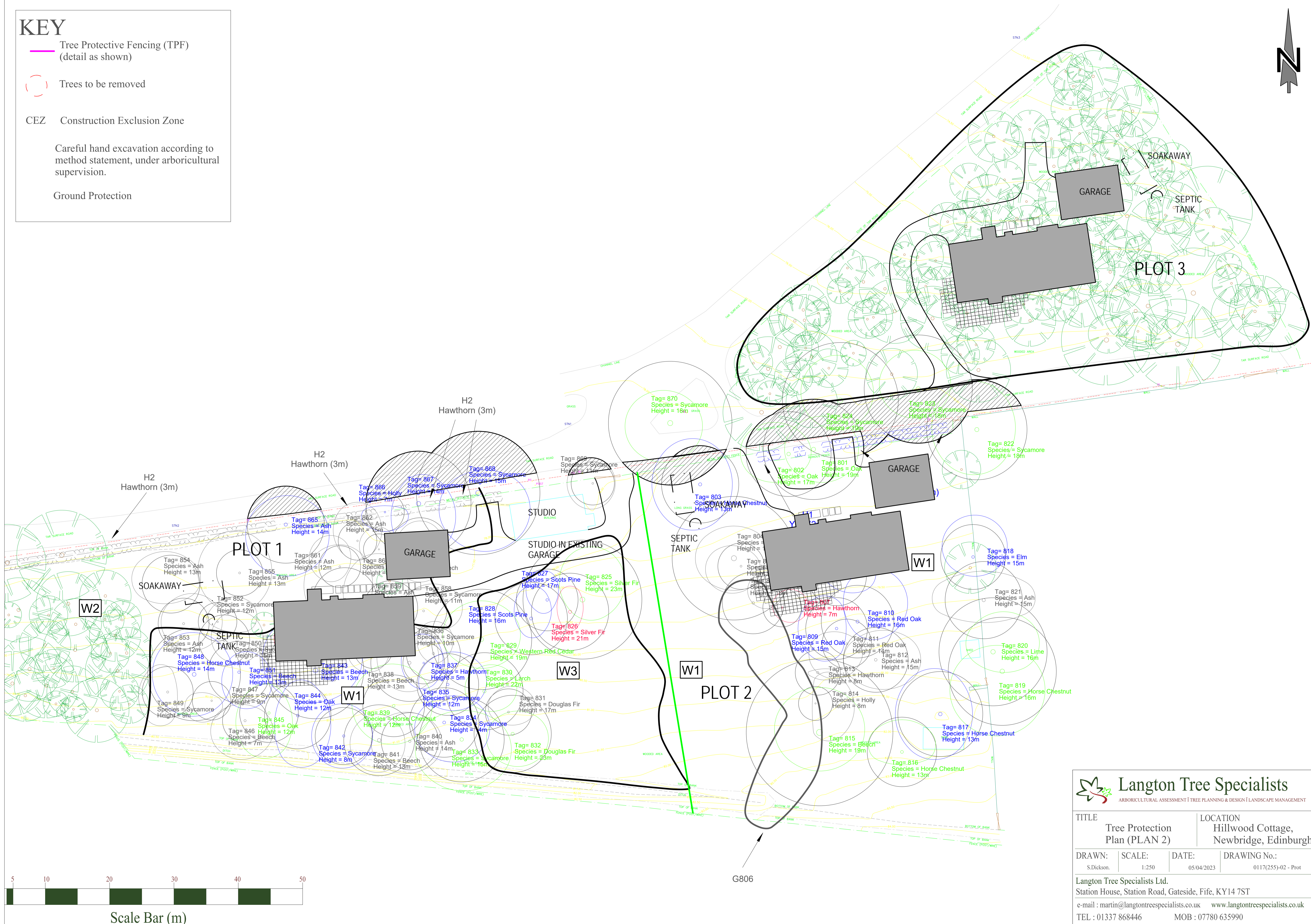
 Tree Protective Fencing (TPF)  
(detail as shown)

 Trees to be removed

CEZ Construction Exclusion Zone

Careful hand excavation according to  
method statement, under arboricultural  
supervision.

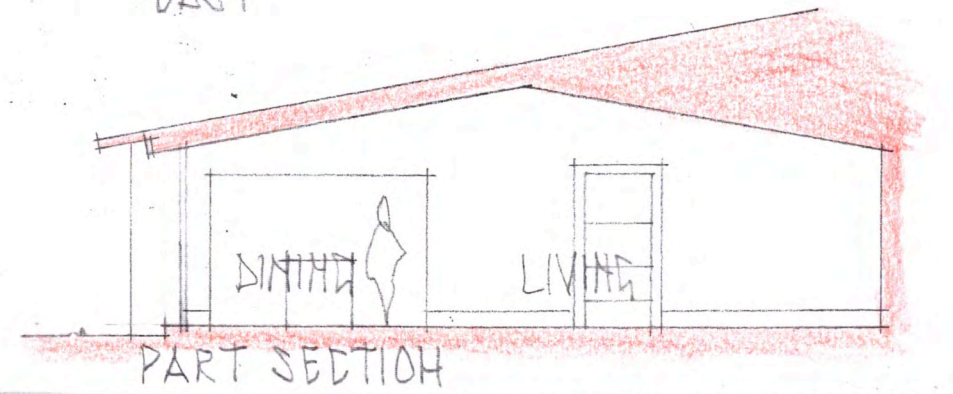
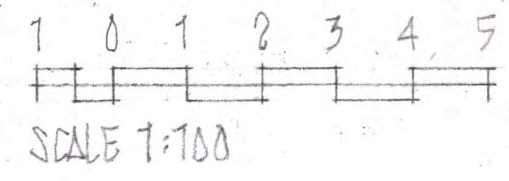
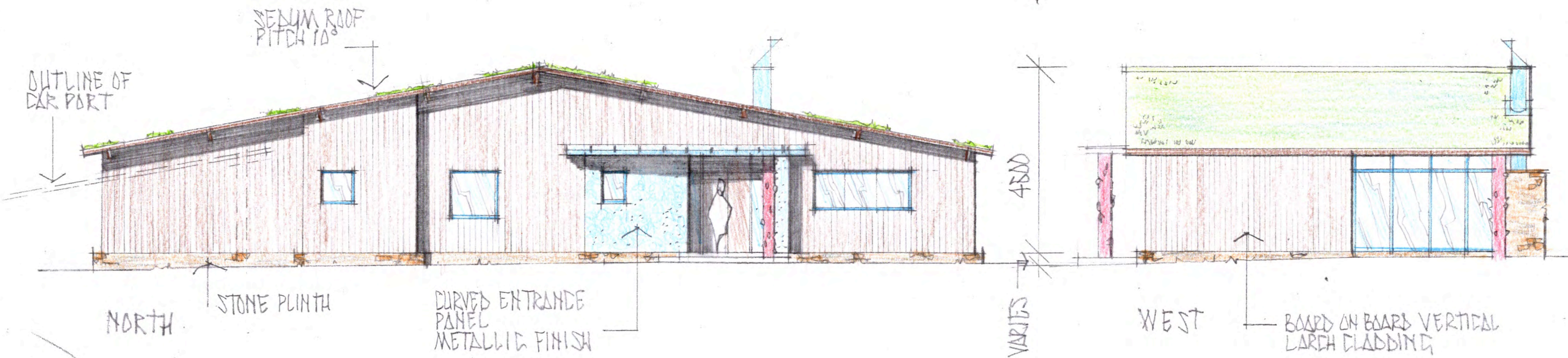
Ground Protection





**Langton Tree Specialists**  
ARBORICULTURAL ASSESSMENT | TREE PLANNING & DESIGN | LANDSCAPE MANAGEMENT

TITLE <b>Tree Protection Plan (PLAN 2)</b>		LOCATION Hillwood Cottage, Newbridge, Edinburgh	
DRAWN: S.Dickson.	SCALE: 1:250	DATE: 05/04/2023	DRAWING No.: 0117(255)-02 - Prot
Langton Tree Specialists Ltd. Station House, Station Road, Gateside, Fife, KY14 7ST e-mail : martin@langontreespecialists.co.uk www.langontreespecialists.co.uk TEL : 01337 868446 MOB : 07780 635990			

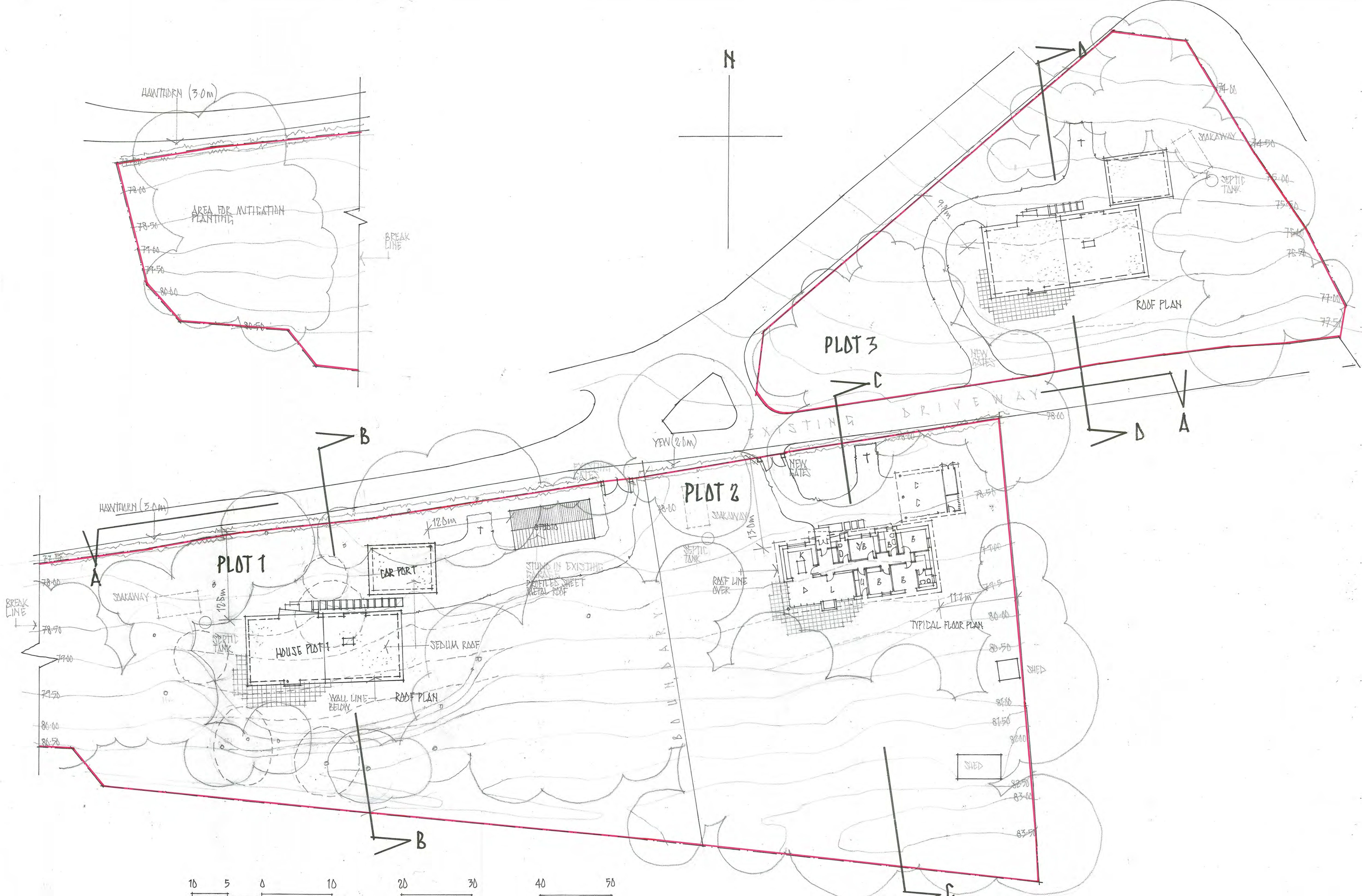


TYPICAL ELEVATIONS

Proposed Development for  
David Watt  
Hillwood Cottage  
Harvest Road, Newbridge  
EH28 8LU

TOM BOMFORD STUDIO  
Architects  
Lyne Cottage Dalginross  
Comrie PH6 2HB  
t: 01764 679 879  
bomfordte@btinternet.com

Date: 10/10/22  
Scale: 1:100  
No: SK/04/A

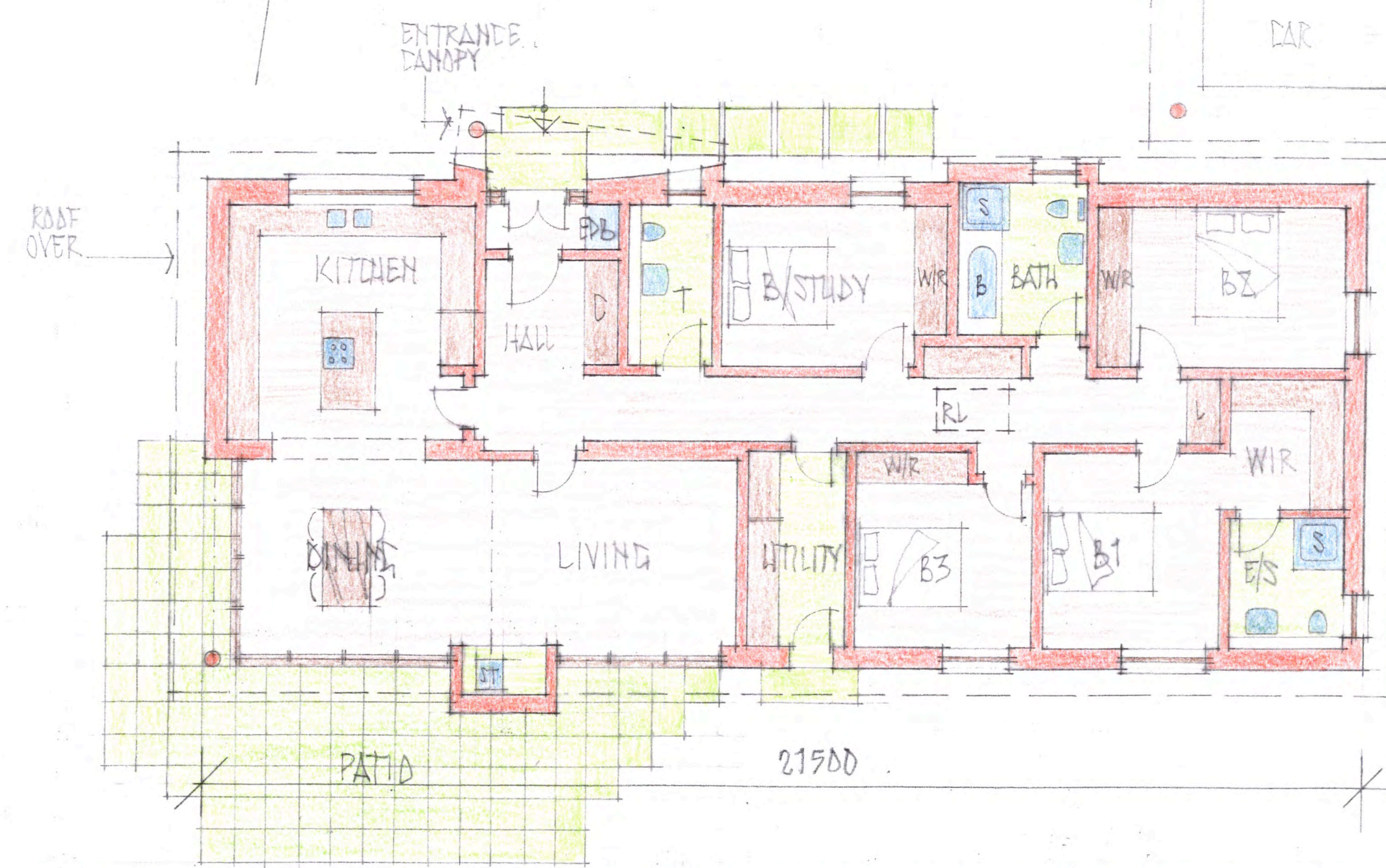
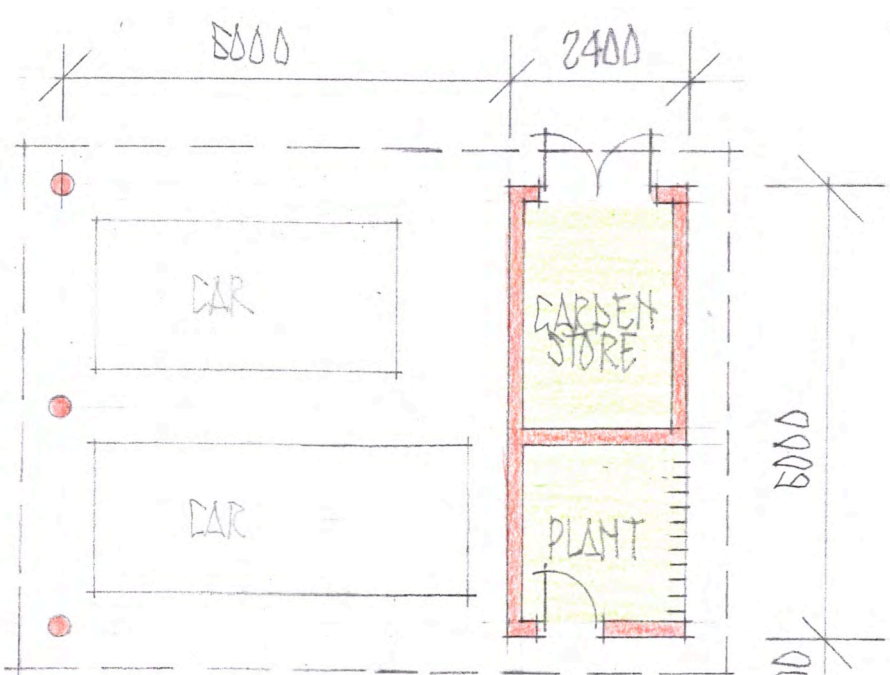
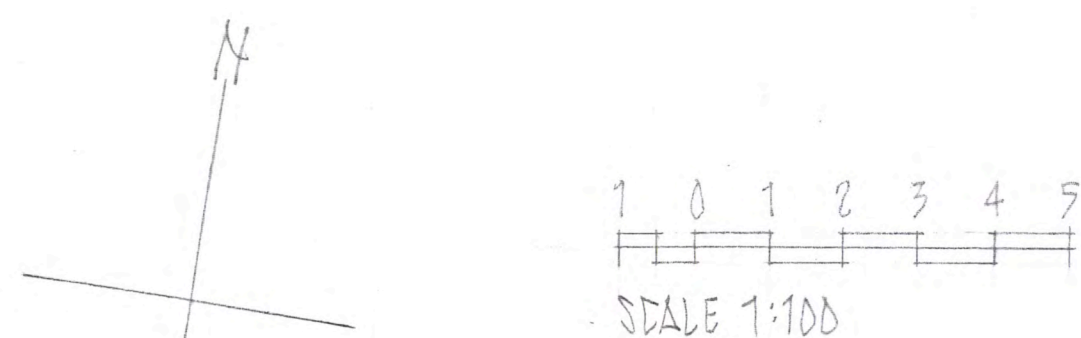


10 5 0 10 20 30 40 50  
 SCALE 1:250

AMENDS: A, 10/11/22, CAR PORTS EXTENDED  
 PATIOS SHOWN  
 PLOT 2 ENTRANCE ADJUSTED  
 PLOT 3 ALT. ENTRANCE DELETED  
 B, 5/2/23 POSITION HOUSE 1 ADJUSTED

### SITE LAYOUT

Proposed Development for David Watt Hillwood Cottage Harvest Road, Newbridge EH28 8LU	TOM BOMFORD STUDIO Architects Lyne Cottage Dalginross Comrie PH6 2HB t: 01764 679 879 bomfordt@btinternet.com	Date: 6/10/22 Scale: 1:250 No: SK/01/B
---	--	--



6000  
1200  
9100

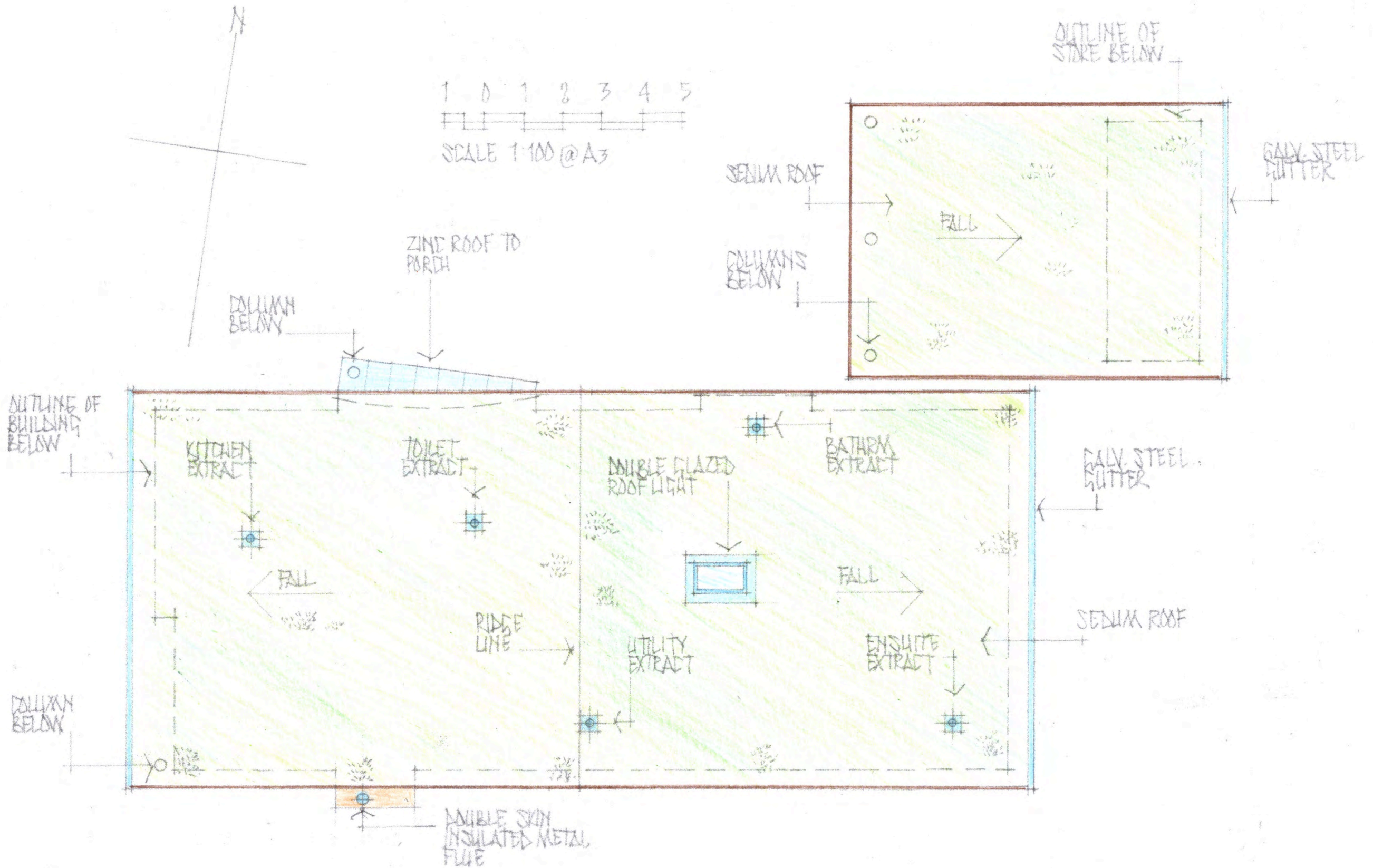
AMENDS A: 9/11/22  
CAR PORT EXTENDED

TYPICAL FLOOR PLAN

Proposed Development for  
David Watt  
Hillwood Cottage  
Harvest Road, Newbridge  
EH28 8LU

TOM BOMFORD STUDIO  
Architects  
Lyne Cottage Dalginross  
Comrie PH6 2HB  
t: 01764 679 879  
bomfordte@btinternet.com

Date: 5/10/22  
Scale: 1:100  
No: SK/03/A



TYPICAL ROOF PLAN

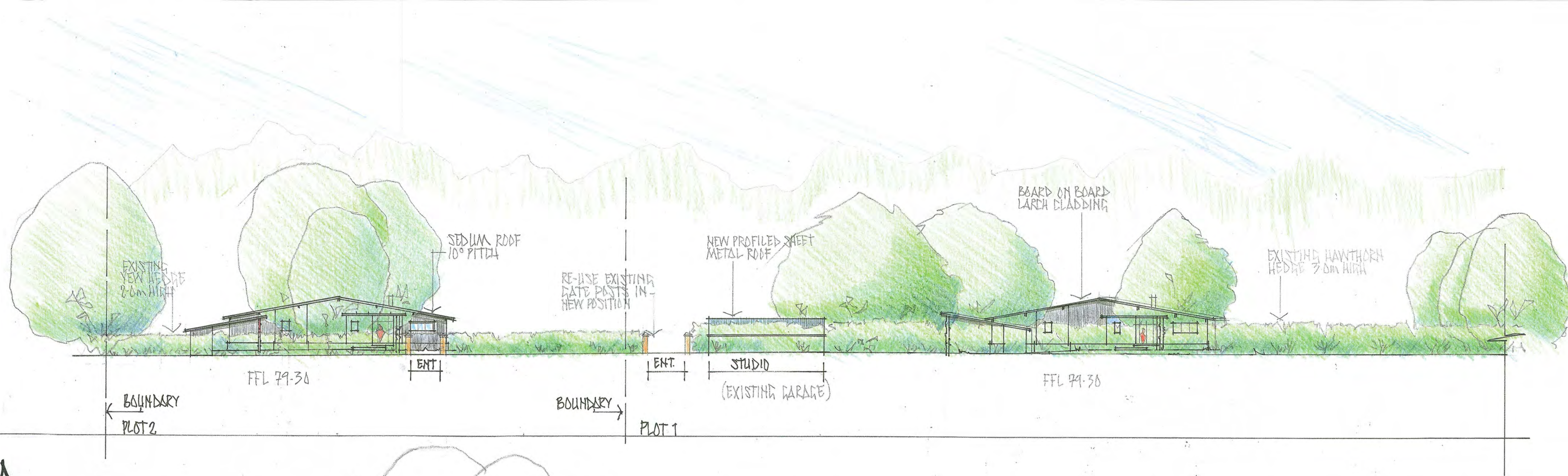
Proposed Development  
for  
David Wattl  
Hillwood Cottage  
Harvest Road, Newbridge  
EH28 8LU

TOM BOMFORD STUDIO  
Architects  
Lyne Cottage Dalginross  
Comrie PH6 2HB  
t: 01764 679 879  
bomfordte@btinternet.com

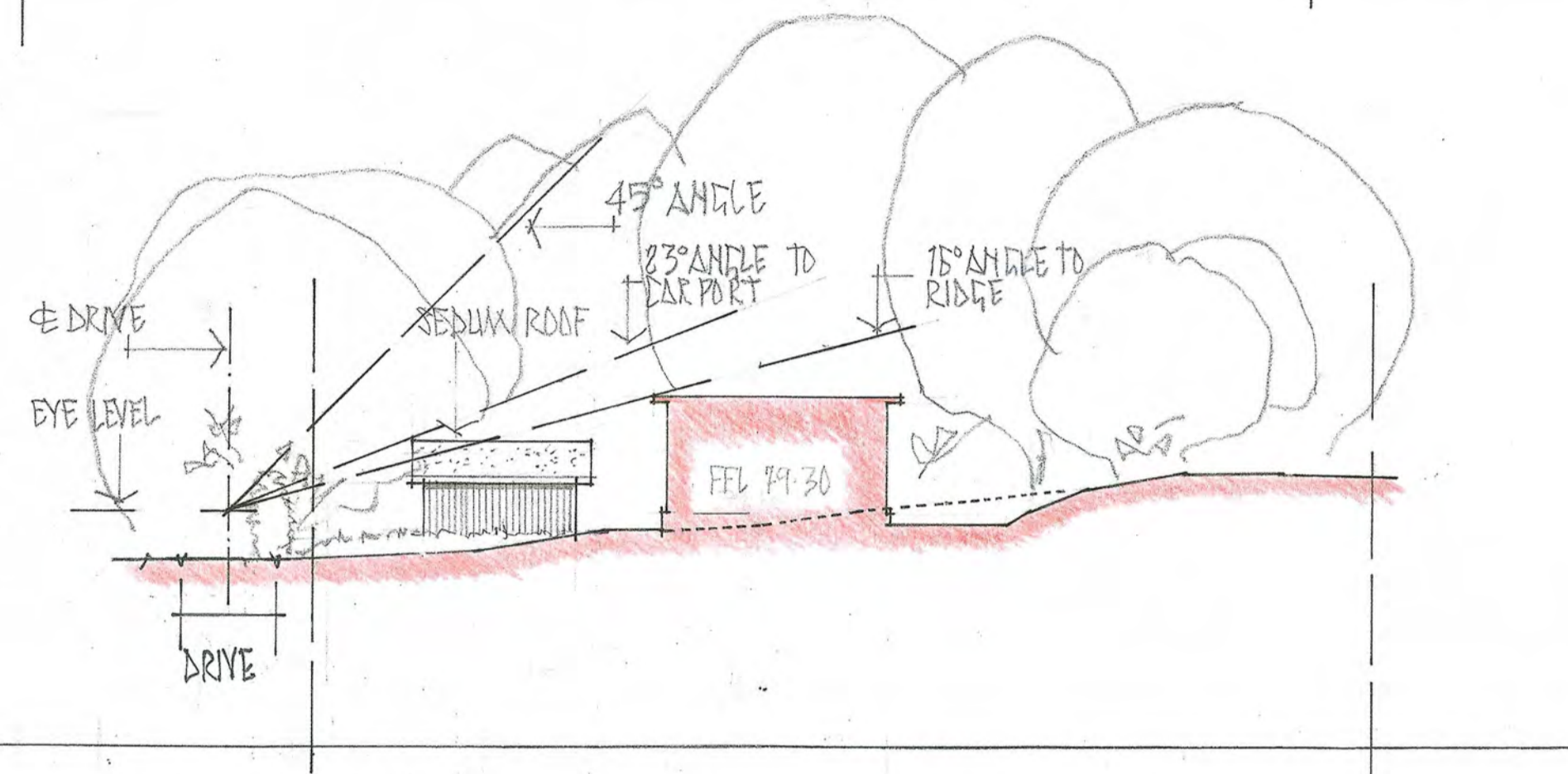
Date: 3/5/23

Scale: 1:100

No: SK/05

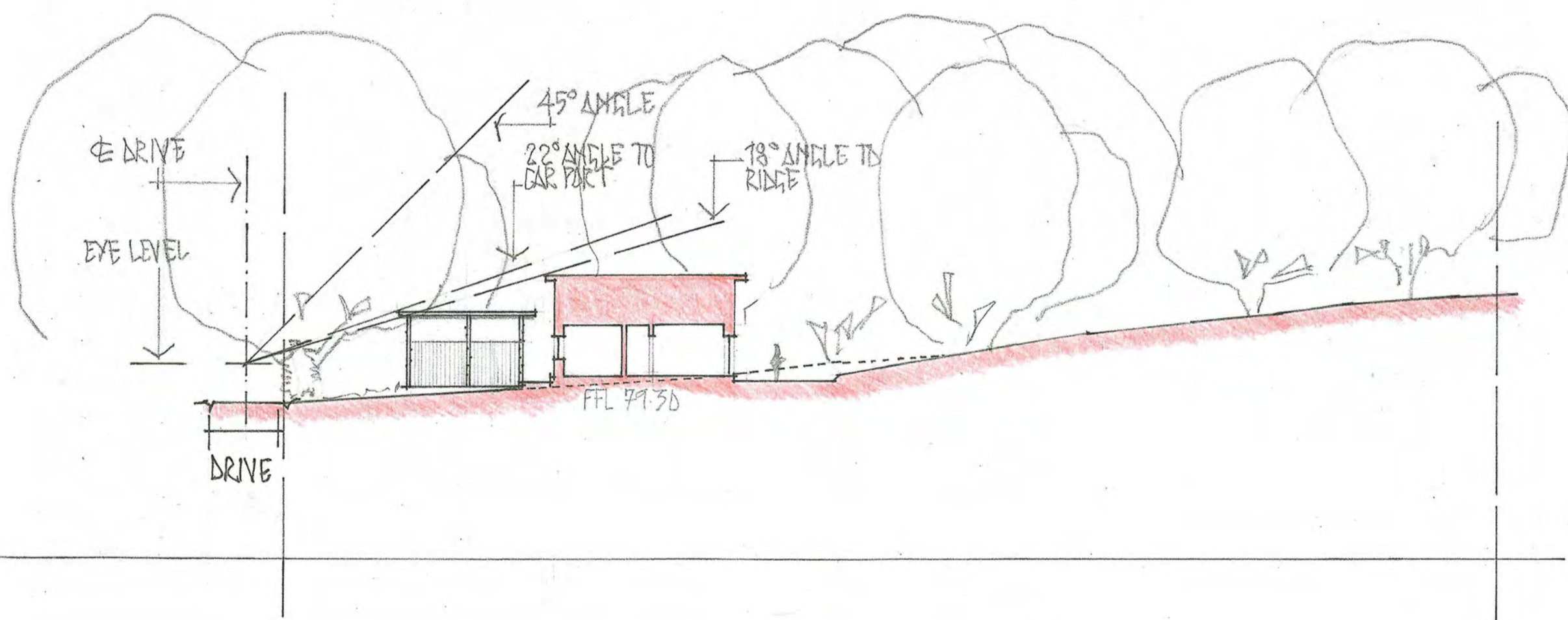


SECTION A-A



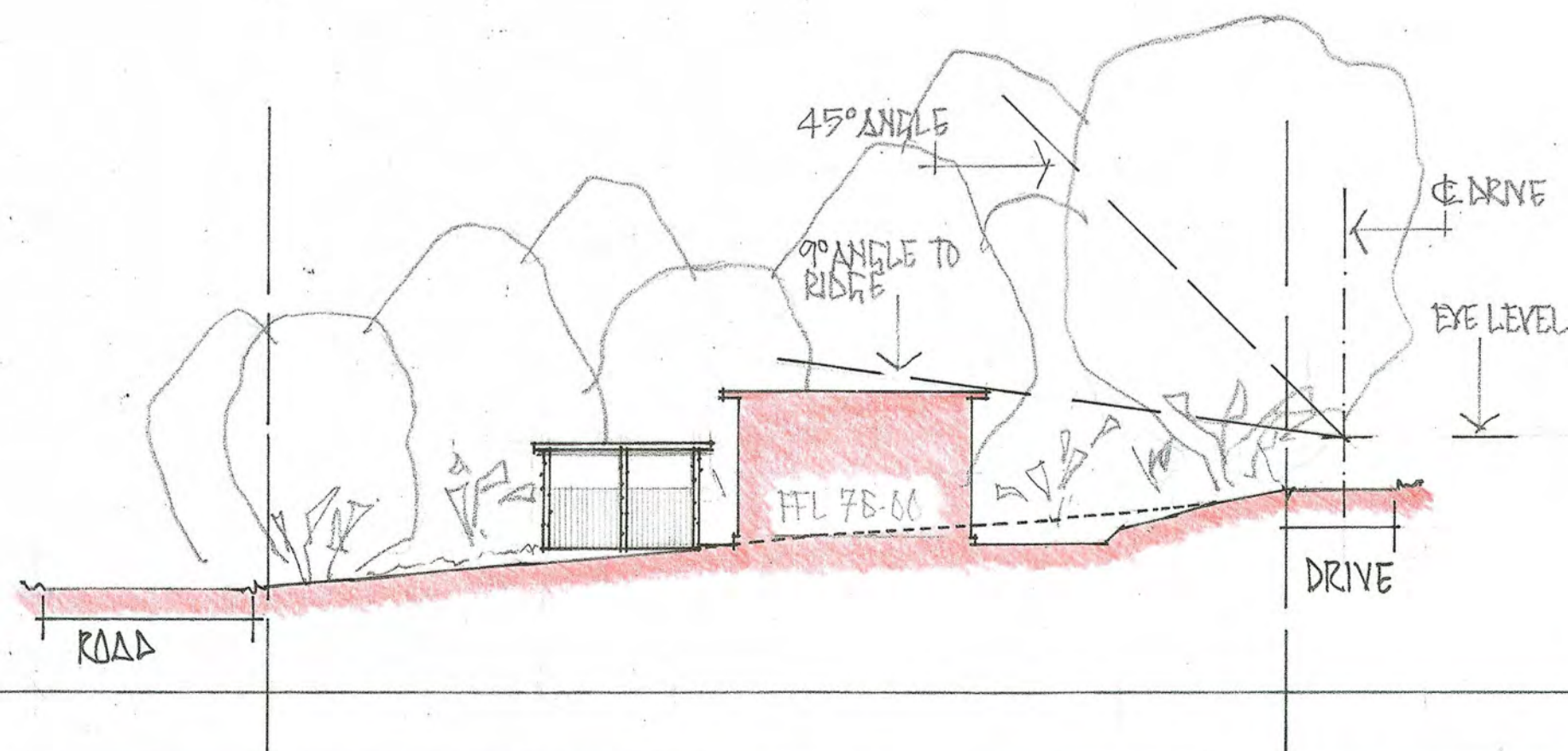
DATUM 70-00

SECTION B-B



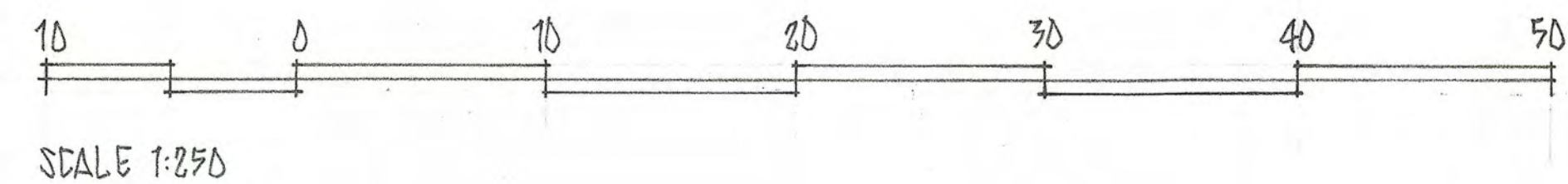
DATUM 70-00

SECTION C-C



DATUM 70-00

SECTION D-D



AMENDS A, 12/11/22  
 PLOT 2, ENTRANCE ADJUSTED  
 B, 6/2/23 POSITION HOUSE PLOT 1 ADJUSTED  
 ENTRANCE HOUSE PLOT 2 ADJUSTED

SECTIONS A-A, B-B, C-C, D-D

Proposed Development  
 for  
 David Wattl  
 Hillwood Cottage  
 Harvest Road, Newbridge  
 EH28 8LU

TOM BOMFORD STUDIO  
 Architects  
 Lyne Cottage Dalginross  
 Comrie PH6 2HB  
 t: 01764 679 879  
 bomfordt@btinternet.com

Date: 7/10/22  
 Scale: 1:250  
 No: SK/02/B